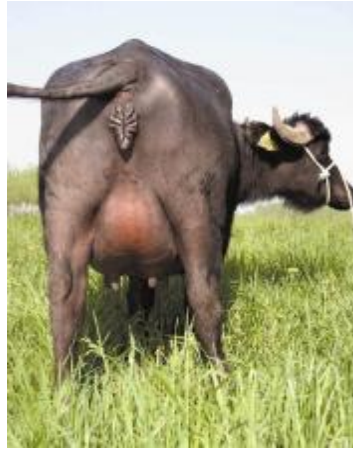


BUFFALO THE BLACK GOLD

The Water Buffalo with its enormous world Population and its, up to now, small genetic Development is for COFA an excellent opportunity to apply its knowhow, acquired in years of work with the bovine species, a great challenge to improve the genetic ability of the buffalo species and a good opportunity to develop a new market. To work on this task COFA has the advantage to find in Italy one of the more productive breed in the world water buffalo population and a breeder association that had developed the tools for a serious work of genetic evaluation and progress.

Breeding Policy

Thanks to ANASB, the Italian Association of Mediterranean Buffalo Breed that manages the evaluation and publishes every quarter of the year the statistics of the progeny test program and the proven buffaloes, Cofa is able to select, every year, on the Italian population of more than 46.000 registered females buffaloes the best young buffaloes to put on progeny test. CoFA gives great importance to the morphological characteristics, and in particular CoFA's experts control bull's dams for udder composite, feet and legs, and milking production.



RESICA CR 1574 VG 86 Dam of:
Malandrino III° and O-B-One

Cofa mission is:

to lead in the development and marketing of superior livestock genetic products and services, in order to help buffaloes producers in maximizing economic benefits by breeding animals of exceptional quality through its crossbreeding program and sexing plan.



The sexed semen will be available in the current year thanks to our collaboration with

SEXING TECHNOLOGIES

Navasota, Texas 77868 USA and its sorting facility at Bibbiano (RE) Italy.

New Release March 2010 COFA Proven Bulls



Malandrino

1°

Milk Index

PKM	227,7
Latte	1009,3
F Kg	71,0
F %	-0,29
P Kg	42,2
P %	-0,13



Caesar

3°

Milk Index

PKM	104,0
Latte	408,6
F Kg	32,0
F %	+0,04
P Kg	18,9
P %	+0,04



O-B-One

4°

Milk Index

PKM	73,5
Latte	341,0
F Kg	23,0
F %	-0,12
P Kg	13,4
P %	-0,08



Goku

5°

Milk Index

PKM	103,2
Latte	337,8
F Kg	28,0
F %	+0,08
P Kg	20,2
P %	+0,19



Jafar

9°

Milk Index

PKM	49,4
Latte	112,8
F Kg	17,0
F %	+0,02
P Kg	8,2
P %	-0,06



Ettore

16°

Milk Index

PKM	21,4
Latte	102,6
F Kg	7,0
F %	+0,02
P Kg	3,6
P %	-0,02



New Border

Embryos are available with high pedigrees through the important genetics in the herd of **Borromeo-Caffi** in collaboration with Avantea laboratory of **Prof. Cesare Galli**, famous world geneticist researcher.



Az. 656 REGINA IT019990015323 VG 87

Owner: Borromeo - Caffi Società Agricola

n°	day	Milk	F %	F Kg	P %	P Kg
1°	270	3783	7,38	279	4,07	154
2°	270	5004	6,16	308	4,42	221

Please send us your E-mail address, in so doing you will continue the program started in the New Millennium with Co.F.A and you'll have access to some of the best genetics available in Italy and world wide.



e.mail casalia@tin.it
web site www.cofa-it.com

